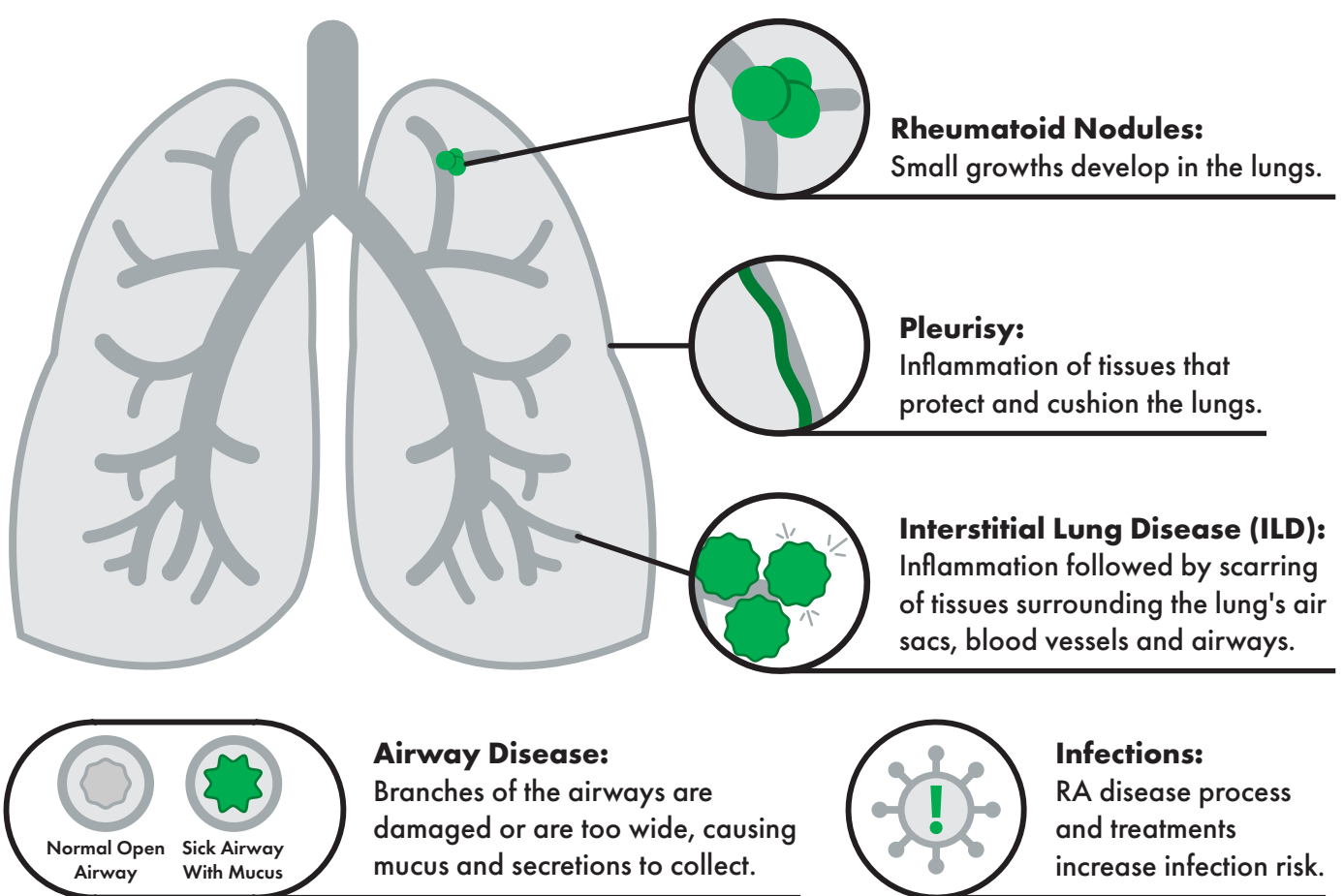


# How Rheumatoid Arthritis Affects the Lungs

Rheumatoid arthritis is a type of inflammatory arthritis. The inflammatory disease process affects joints and may affect other parts of the body, including the lungs. An infection or environmental factors can cause or worsen lung problems. While lung symptoms usually appear after joint symptoms, in some cases, they can be one of the first signs of RA.

## Lung Comorbidities of RA



## Common Lung Symptoms

	ILD	Airway Disease	Pleurisy	COVID
Shortness of breath	●	●	●	●
Dry Cough (no mucus)	●		●	●
Cough With Mucus		●		
Sharp Stabbing Chest Pain (especially when breathing, sneezing, coughing)			●	
Wheezing		●		
Chest Tightness/Pain	●	●		
Fever		●	●	●
Chills		●		●
Nausea or Vomiting				●
Fatigue	●	●	●	●

\*There are no symptoms with nodules unless they rupture and cause a collapsed lung.

## How to Protect Your Lung Health

- Get regular check-ups to monitor your lungs and check for abnormalities.
- Don't smoke.
- Be up to date on your COVID and flu vaccines, but always check with your doctor before getting any vaccinations.
- Follow your RA treatment plan and keep inflammation under control.
- Contact your doctor right away if you have shortness of breath, a severe cough or wheezing that won't go away, especially when accompanied by a fever.



### Sources:

<https://www.mayoclinic.org/diseases-conditions/interstitial-lung-disease/symptoms-causes/syc-20353108>  
<https://www.lung.org/lung-health-diseases/lung-disease-lookup/interstitial-lung-disease>  
<https://www.nhlbi.nih.gov/health-topics/bronchiectasis>  
<https://www.medicalnewstoday.com/articles/158813#symptoms>  
<https://www.cdc.gov/coronavirus/2019-ncov/symptoms-testing/symptoms.html>  
<https://my.clevelandclinic.org/health/diseases/17809-interstitial-lung-disease#:~:text=Interstitial%20lung%20disease%20is%20another,which%20can%20make%20breathing%20difficult>